



# TRAFFIC ALERT

**FOR IMMEDIATE RELEASE**

November 23, 2016

News Contact: Kimberly Qualls, (785) 640-9340 or [kimberly.qualls@ks.gov](mailto:kimberly.qualls@ks.gov)

## **Eastbound and Westbound I-70 from 110th Street to K-7 Interchange**

### **24/7 RAMP CLOSURES:**

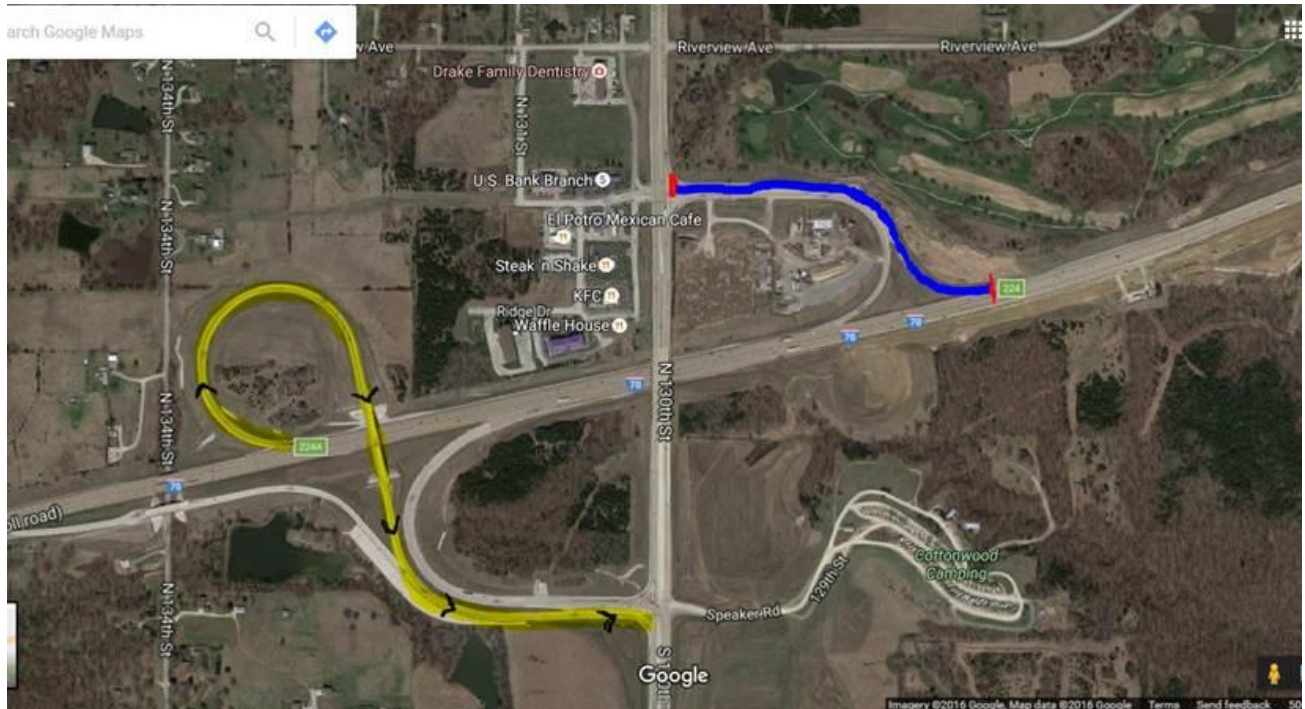
110th Street to westbound I-70 ramp CLOSED for pavement reconstruction work, 24/7 round the clock, beginning at **9 a.m. on Tuesday, November 29 through Summer 2017**, weather permitting.

Traffic will detour via 110th Street to eastbound I-70 to the northbound I-435 ramp exit, then immediately take the northbound I-435 to westbound I-70 ramp to access westbound I-70. See detour map below.



Westbound I-70 to northbound K-7 ramp CLOSED for ramp reconstruction work, 24/7 round the clock, beginning at **9 a.m. on Wednesday, November 30 through Summer 2017**, weather permitting.

Traffic will detour via the newer westbound I-70 to northbound and southbound K-7 ramp located west of K-7 to access northbound K-7. See detour map below.



## 24/7 LANE CLOSURES:

Westbound I-70 from K-7 to 110th Street will be reduced to TWO OPEN LANES and moved from its current location onto new pavement for continued pavement construction widening work beginning at **9 a.m. on Wednesday, November 30 through Summer 2017**, weather permitting.

There will be a lane width restriction of 28-foot total and a 60 mph posted speed limit through the work zone. Traffic will be directed through the work zone via concrete barrier along the center median only.

Eastbound I-70 from K-7 to 110th Street reduced to TWO OPEN LANES for pavement construction work beginning at **9 a.m. on Wednesday, November 30 through Summer 2017**, weather permitting.

There will be no lane width restriction and a 60 mph posted speed limit though the work zone. Traffic will be directed through the work zone via concrete barrier along both the center median and outside shoulder.

Updated daily traffic information for this project and for the entire Kansas City Metro Area can be viewed online any time at:

[www.ksdot.org/kcmetro/laneclose.asp](http://www.ksdot.org/kcmetro/laneclose.asp).

The K-7 & I-70 Interchange Project construction handout for Phase 3, including phasing schedule and traffic impacts, is available online

at: [http://www.k7andi70interchange.org/today/K-7%20and%20I-70%20HANDOUT%20No%205\\_final.pdf](http://www.k7andi70interchange.org/today/K-7%20and%20I-70%20HANDOUT%20No%205_final.pdf)

The Kansas Department of Transportation urges all motorists to be alert, take it slow, obey the warning signs, and “Give ‘Em a Brake!” when approaching and driving through the project work zone.

Phase 3 of the Mega K-7 and I-70 Interchange Expansion Project is scheduled to be completed in Spring 2017, weather permitting. (*KDOT Project #70-105 KA 1003-08*)

###

This information is available in alternative accessible formats. To obtain an alternative format, contact KDOT Office of Public Affairs, Eisenhower Building, 700 SW Harrison, 2nd Floor West, Topeka, Kan., 66603-3754, or (785) 296-3585 (Voice)/Hearing Impaired - 711.

Click below to connect to KDOT’s Social Networks:

